

UPRIGHT BASS

# WABASH BLUES

COMPOSED BY ISHAM JONES

(AS PLAYED BY JOHNNY HODGES & DUKE ELLINGTON)

TRANSCRIBED BY BEN LOWMAN WWW.BENLOWMAN.COM

♩ = 150 LATIN FEEL

4

(SAMPLE BASSLINE)

5  $B^9$   $E_b^6$  1-4 1 2 3 4 TRIPLET SWING

**(A)** \* D.S. AL CODA

10  $F_m^7$   $B_b^7$   $E_b^6$

14  $F_m^7$   $B_b^7$   $E_b^6$   $E_b^7$

18  $A_b^7$   $A^{\circ}7$   $E_b^6$

22  $B^7$   $B_b^7$

26  $F_m^7$   $B_b^7$   $E_b^6$

30  $F_m^7$   $B_b^7$   $E_b^6$   $E_b^7$

34  $A_b^6$   $A^{\circ}7$   $E_b/B_b$   $A_b^{\circ}7$   $G_m^7$   $C^7$   
 $E_b^6$

38  $F_m^7$   $B_b^7$   $E_b^6$   $B_b^7$   $\oplus$  TO CODA

2

# UPRIGHT BASS

**(B)**

SOLO SECTION (SWING)

42

Fm7

Bb7

Eb6

Musical staff for measures 42-45, showing a bass clef, key signature of two flats (Bb, Eb), and a repeat sign at the beginning. The staff contains four measures of rhythmic notation represented by diagonal slashes.

46

Fm7

Bb7

Eb6

Eb7

Musical staff for measures 46-49, showing a bass clef, key signature of two flats, and four measures of rhythmic notation represented by diagonal slashes.

50

Ab7

Ao7

Eb6

Musical staff for measures 50-53, showing a bass clef, key signature of two flats, and four measures of rhythmic notation represented by diagonal slashes.

54

B7

Bb7

Musical staff for measures 54-57, showing a bass clef, key signature of two flats, and four measures of rhythmic notation represented by diagonal slashes.

58

Fm7

**(C)**

Bb7

Eb6

Musical staff for measures 58-61, showing a bass clef, key signature of two flats, and four measures of rhythmic notation represented by diagonal slashes.

62

Fm7

Bb7

Eb6

Eb7

Musical staff for measures 62-65, showing a bass clef, key signature of two flats, and four measures of rhythmic notation represented by diagonal slashes.

66

Ab7

Ao7

Eb/Bb  
Eb6

Abm7

Gm7

C7

Musical staff for measures 66-69, showing a bass clef, key signature of two flats, and four measures of rhythmic notation represented by diagonal slashes.

70

Fm7

Bb7

Eb6

Bb7

D.S. AL CODA

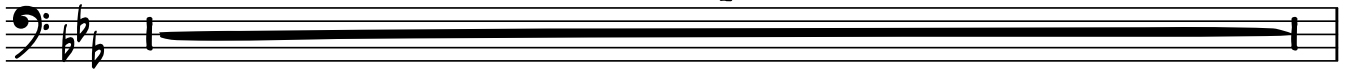
Musical staff for measures 70-73, showing a bass clef, key signature of two flats, and four measures of rhythmic notation. The final measure contains a double bar line, a fermata, and a C-clef (Coda) symbol.

# UPRIGHT BASS

⊕ CODA

LATIN FEEL

4



75-78

(SAMPLE BASSLINE)

